

OCP Coyote Popup Display Case

OCP

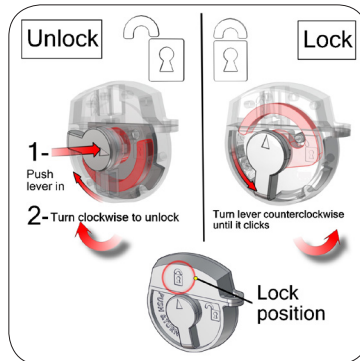
This blow-molded display case is the perfect protective shipping case for Coyote Popup displays. With built-in wheels, a sturdy handle, and **NEW, improved** secure locks, this case ensures your Coyote Popup travels safely and securely to any event. A roll wrap and stretch wrap is available to help you easily convert the case to a counter.



NEW push & turn locking mechanism



Recessed wheels and handle



Lock instructions

features and benefits:

- **NEW** locking mechanism
- Premium latches for maximum strength
- Light storage within lid
- Blow-molded case
- Built-in wheels and handle for maximum portability
- Fabric or graphic wrap options available
- One year limited warranty against manufacturer defects

dimensions:

Hardware

Interior:
35"l x 21"h x 12"d
889mm(l) x 533.4mm(h) x 305mm(d)

Exterior:
40"l x 26"h x 16"d
1016mm(l) x 660.4mm(h) x 406.4mm(d)

Weight:
31 lbs / 14 kgs

Shipping

Shipping (in box):
40"l x 27"h x 18"d
1016mm(l) x 686mm(h) x 457mm(d)

Approximate shipping weight:
31 lbs / 14 kgs



We are continually improving and modifying our product range and reserve the right to vary the specifications without prior notice. All dimensions and weights quoted are approximate and we accept no responsibility for variance. E&OE. See Graphic Templates for graphic bleed specifications.

OCS

OCS

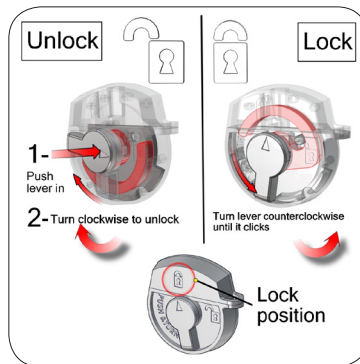
This blow-molded display case is the perfect protective shipping and storage case for a variety of display products. Built-in wheels and easy-to-grip molded handles make the case portable and easy to transport. New premium latches keep the lid secure.



NEW push & turn locking mechanism



Recessed wheels and handle



Lock instructions

features and benefits:

- **NEW** locking mechanism
- Premium latches for maximum strength
- Blow-molded case
- Reliable built-in wheels with enclosed axel
- One year warranty against manufacturer defects

dimensions:

Hardware

Interior:
13"l x 15"w x 39.5"h
330mm(l) x 381mm(w) x 1003mm(d)

Exterior:
18"l x 18"w x 44"h
457mm(l) x 457mm(w) x 1118mm(h)

Weight:
18 lbs / 8.16 kg

Shipping

Shipping dimensions - in box:
19"w x 19"h x 45"d approx.
483mm(w) x 483mm(h) x 1143mm(h)

Approximate shipping weight:
20 lbs / 9 kg

We are continually improving and modifying our product range and reserve the right to vary the specifications without prior notice. All dimensions and weights quoted are approximate and we accept no responsibility for variance. E&OE. See Graphic Templates for graphic bleed specifications.